

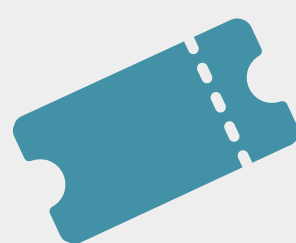
Proudly presents

Student Finance Webinar

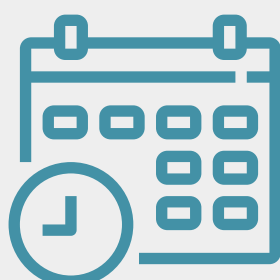
Join Uni Connect in partnership with Student Finance England to get the latest update on all things Fees and Finance. If you're thinking of going to university, then hear firsthand from SFE about how much it costs and the latest funding opportunities.

We will be covering:

- Tuition Fee Loans
- Maintenance Loans
- Bursaries and Scholarships
- Extra funding available to you
- How and when to apply
- Paying it back



Free to attend for all post-16 students and parents/carers



Wednesday 5 March
2025, 6 - 7 pm



Register below to receive the TEAMS Webinar link

[REGISTER HERE](#)